

IMPORTANT SAFETY INSTRUCTIONS

When using electrical appliances, especially when children are present, basic safety precautions should always be taken, including the following:

READ ALL INSTRUCTIONS BEFORE USING KEEP AWAY FROM WATER

DANGER — Any appliance is electrically live even when the switch is off. To reduce the risk of death by electric shock:

1. **Always unplug appliance immediately after using.**
2. Do not use while bathing or in the shower.
3. Do not place or store appliance where it can fall or be pulled into a tub or sink.
4. Do not place in, or drop into, water or other liquids.
5. If an appliance falls into water, unplug it immediately. **Do not reach into the water.**

WARNING — To reduce the risk of burns, electrocution, fire, or injury to persons:

1. **This appliance should never be left unattended when plugged in.**
2. This appliance should not be used by, or near children or individuals with certain disabilities.
3. Use this appliance only for its intended use, as described in this manual. Do not use attachments not recommended by the manufacturer.
4. **Never operate this appliance if it has a damaged cord or plug, if it is not working**

properly or if it has been dropped or damaged, or dropped into water. Return the appliance to an authorized service center for examination and repair.

5. Keep the cord away from heated surfaces. **Do not pull, twist, or wrap line cord around appliance.**
6. Never use while sleeping.
7. Never drop or insert any object into any opening or hose.
8. Do not use outdoors or operate where aerosol (spray) products are being used or where oxygen is being administered.
9. Unit is hot when in use. Do not let heated surface touch eyes or skin.
10. **Do not place the heated unit directly on any surface while it is hot or plugged in.**
11. Never block the air openings of the appliance or place on a soft surface such as a bed or couch, where the air openings may be blocked. Keep the air openings free of lint and other debris.
12. Do not use an extension cord with this appliance.
13. Do not touch hot surfaces of the appliance. Use handles or knobs.
14. Do not attempt to touch the housing of your appliance near the heating plate, as it is hot when in use.
15. Do not use with a voltage converter.
16. Before plugging in read the information about dual voltage in this manual.
17. This appliance is not a toy. Keep away from children.

Due to high heat temperatures, this styler should not be used on hair extensions.

SAVE THESE INSTRUCTIONS

USING INSTANT HEAT, THE HIGH HEAT TEMPERATURE SETTINGS & UNIFORM HEAT RECOVERY SYSTEM

This styling iron features a heater that maintains temperature during use for precision styling. It heats up to the temperature you've selected for your hair type.

This Instant Heat technology has two high-heat temperature settings. There is a temperature range that's gentle and safe for every type of hair, from the finest to the curliest and most resistant, to help you create the look you want. And that's not all. Conair's professional salon standards of engineering provide you with a uniform and improved heat recovery system that maintains the iron at a constant temperature. There is a constant surge of power to ensure that heat is continuously and quickly delivered for optimal styling results, unlike other units, which lose heat during use. This provides consistent styling power so that every strand of your hair is set with the same level of heat and comes out the same way for a perfect finish.

GET TO KNOW YOUR 2-in-1 STYLING IRON



OPERATING INSTRUCTIONS

Use on Alternating Current (50/60 hertz) only. This unit is designed to be operated at 120/240 volts AC.

This appliance has a polarized plug (one blade is wider than the other). As a safety feature, this plug will fit in a polarized outlet only one way. If the plug does not fit fully in the outlet, reverse the plug. If it still does not fit, contact a qualified electrician. Do not attempt to defeat this safety feature.

DUAL VOLTAGE

This styling iron will automatically adjust to the proper voltage. Use an adapter plug with correct configuration, prior to use in outlet.

TO STYLE HAIR

Hair should be clean and completely dried before using the 2-in-1 styling iron. Plug the iron into an electrical outlet. Turn on unit. Slide the switch to the LOW (I) or HIGH (II) position with the unit power on. The LED light will illuminate immediately.

Slide switch to OFF (O) position. The unit will turn off (light will go off). Never leave your 2-in-1 styling iron on and unattended.

WARNING: The 2-in-1 styling iron's tourmaline ceramic-coated plates will get very hot within a few seconds. The side cooling plates can become warm and should not be placed in contact with the skin after the 2-in-1 styling iron has been turned on.

GETTING STARTED

Temperature Setting Guide

TEMP. CONTROL	HAIR TYPE
LOW (I) 300°F/150°C	Delicate, thin, easy-to-style hair; default setting
High/Max (II) 360°F/180°C	Average to thick or treated hair; hard-to-style hair

The iron's unique two high-heat temperature settings and Instant Heat technology provide styling versatility for all hair types. If you have fine hair, a low temperature will provide the best results. If you have thick, wavy or hard-to-style hair, keep the heat setting on HIGH (II). You can vary the iron's temperature according to your particular needs!

STRAIGHTENING

For best results, use a light styling product before blow-drying hair. Start with a hair section that is 1-inch (2.5 cm) wide and no more than ½-inch (1.25 cm) thick. Open the iron and place a hair section between the two hot plates, close to the scalp. Trap hair between the plates by firmly squeezing the handles together. While maintaining the tension, slowly pull the unit down along the hair section toward the end. At the end of hair section, release the pressure on the handle and allow the hair section to slide out. Repeat process on additional sections of hair until you achieve the hair style you desire. It may be necessary to repeat process on certain areas, depending on the texture of your hair.

- For extra control, use the easy-grip cool tips at the end of the appliance.



CURLING

The styler uses revolutionary technology that creates fast, easy curls in a single stroke, making curling as easy as straightening and producing beautiful, modern curls.

Creating Curls

- Set temperature at the LOW (I) setting.
- Separate a section of hair. The smaller the section, the more defined the curl; the larger the section, the looser the curl or wave. For best results, the section should be no more than 1-inch (2.5 cm) wide.
- Take a section of hair and slide the unit into the hair at the roots, making sure that the side curved cooling plates are facing toward the head, and close the plates together.
- Turn the unit 360° downward, so that the side curved curling plates are facing outward.



STRAIGHTENING WITH THE NEW TOURMALINE CERAMIC-COATED PLATES

Your new 2-in-1 styling tool has tourmaline ceramic-coated plates, the latest in technological advances. Tourmaline emits infrared heat for gentle styling, and natural ions that reduce frizz, help smooth down flyaways, and renew the vitality of your hair.

As you smooth your hair, heat is evenly distributed so that the style you create has a salon-perfect, silky-smooth finish. Hair also slips right through the plates after it's straightened.

The new tourmaline ceramic technology is a pleasure to work with, makes styling your hair easier and provides more professional results.

You'll find not only that hair glides easily over the surface of the plates as you're straightening, but it's simpler to clean off styling product residue, etc., after each use.

- Slowly glide the unit along the length of the hair from roots to tips in an outward motion.
- Release the unit from the hair.
- To ensure the curl sits neatly in place, take the end of the section you have just curled and turn 360° in the direction of the curl.
- Repeat as necessary.

Some experience is necessary when learning to use this 2-in-1 styling tool. After using the iron several times, you will learn the ideal way to straighten and style your hair.



USER MAINTENANCE

Your 2-in-1 styling iron is virtually maintenance free. No lubrication is needed. Keep all vents and openings clear of dirt and dust. If cleaning becomes necessary, disconnect the unit from the power source, allow to cool and wipe exterior with a cloth. If any abnormal condition occurs, unplug the unit, allow it to cool, and return it for repair to an authorized service center only. No repairs should be attempted by the consumer.

CAUTION

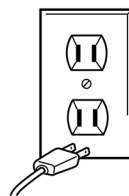
NEVER allow the power supply cord to be pulled, twisted, or severely bent. Never wrap the cord tightly around the appliance. Damage will occur at the high flex point of entry into the appliance, causing it to rupture and short circuit. Inspect the cord frequently for damage. Stop use immediately if damage is visible or if unit stops or operates intermittently.

STORAGE

When not in use, your appliance is easy to store. Allow appliance to cool, then simply store out of reach of children in a safe, dry location. **Do not jerk or strain cord at plug connections.** Do not wrap the line cord around the appliance. Allow the cord to hang or lie loose and straight at the point of entry into the appliance.

WARNING: IF YOU THINK THE POWER IS OFF WHEN THE SWITCH IS OFF, YOU'RE WRONG.

KEEP AWAY FROM WATER



Everyone knows that electricity and water are a dangerous combination. But did you know that an electric appliance is still electrically live even if the switch is off? If the plug is in, the power is on. So when you are not using your appliances, keep them unplugged.

ALWAYS UNPLUG SMALL APPLIANCES

LIMITED TWO-YEAR WARRANTY (U.S. AND CANADA ONLY)

Conair will repair or replace, at our option, your appliance free of charge for 24 months from the date of purchase if the appliance is defective in workmanship or materials.

To obtain service under this warranty, return the defective product to the service centre nearest you, together with your sales slip and \$7.50 for postage and handling. In the absence of a receipt, the warranty period shall be 24 months from the date of manufacture.

ANY IMPLIED WARRANTIES, OBLIGATIONS, OR LIABILITIES, INCLUDING BUT NOT LIMITED TO THE IMPLIED WARRANTY OF MERCHANTABILITY AND FITNESS FOR A PARTICULAR PURPOSE, SHALL BE LIMITED IN DURATION TO THE 24 MONTH DURATION OF THIS WARRANTY.

IN NO EVENT SHALL CONAIR BELIEVABLE FOR ANY SPECIAL, INCIDENTAL, OR CONSEQUENTIAL DAMAGES FOR BREACH OF THIS OR ANY OTHER WARRANTY, EXPRESS OR IMPLIED, WHATSOEVER. This warranty gives you specific legal rights, and you may also have other rights which vary from province to province.

SERVICE CENTRE :

CONAIR CONSUMER PRODUCTS ULC
100 Conair Parkway,
Woodbridge, ON L4H 0L2

Printed in China

1-855-926-6247

Visit our Web site: www.conaircanada.ca

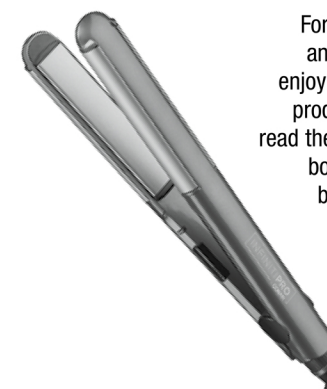
Consumer Call Centre E-mail:
Consumer_Canada@Conair.com

©2018 CONAIR CONSUMER PRODUCTS ULC

Due to continued product enhancements, product image may differ slightly from actual product purchased.

17CN032768

IB-15492



For your safety and continued enjoyment of this product, always read the instruction book carefully before using.

Have a Question?

Please do not return this product to the retailer.

Call Us First!

Our customer service and product experts are ready to answer ALL your questions.

Please call our TOLL-FREE customer service number at:

1-855-926-6247

or visit us online at www.conaircanada.ca

Instruction & Styling Guide

Model CS584XAC